

MEDICAL LINE PRODUCT CATALOG



ALLIED TECHNO CONTROL SYSTEMS

MEDICAL EQUIPMENTS AND MEDICAL EQUIPMENT CONTROLLERS

MEDICAL EQUIPMENT AND CONTROLLERS MANUFACTURER

COMPANY INTRODUCTION AND HISTORY

MACHINE DEDICATED ELECTRONIC CONTROL SYSTEMS MANUFACTURER

The Supremacy of credibility
Keep improving

Continuous Innovation
The Sustainable
Development



Fully Customization
available for almost all
controller types



New Development
Available for required
Dedicated PLC controllers

**PROUD TO BE :
MADE IN PAKISTAN**



ALLIED TECHNO CONTROL SYSTEMS
JHUMRA ROAD, MANSOORABAD,
FAISALABAD, PAKISTAN-38000.

ALLIEDTECHNOLOGIST@GMAIL.COM

www.alliedtechno.com



[/alliedtechnocontrolsystems/](https://www.facebook.com/alliedtechnocontrolsystems/)

Introduction

Allied Techno Control Systems was formed in 2002 by a group of multi-talented technical professionals to provide one source for complete Engineering and Product Development Expertise, AL.

Our ideal client profile ranges from a company with low product development capability for Dedicated Electronic Control Systems, seeking to develop new / upgrade products, to a large company, with a need to OFF-Load electronics works to a sophisticated engineering support facility.

Our staff's skill, experience, and dedication to excellence ensure allied-techno a place at the forefront of our industry.

Our talented engineers / technicians set the highest standards for efficient, accurate design and precision manufacturing. Our Control Panels demand precision, durability and well thought-out design.

As a working partner in your business, we don't stop at the shipping dock, but remain your partner from design consultation to inventory control. We help you make the right decisions and then produce the right systems with accuracy and precision.

THIS WAY WE ENSURE YOU WILL RECEIVE TOP QUALITY PLC PRODUCTS THAT MEET YOUR TOUGHEST DEMANDS, IA.

LED PHOTOTHERAPY LIGHT DC INVERTER TYPE

KEY FEATURES

- LED Phototherapy for new born Infant Jaundice Treatment (10 x 18 inch Effective Area)
- Easy to use with Infant Warmer (Tilt able 0-60 degree) and Infant Incubator (Stand Removable)
- High Power Focused LED Light (4 Times more power than conventional tube light*)
- LED Life > 20,000 Hour @ 30 C (10 Times better life than conventional tube light)
- DC LED Inverter Drive consume Less electricity < 35W (60% Electric Power Saving than a conventional tube lights*)
- Fan less Design, No Heat Exhaust (No Temperature Rise for Infant body)
- Dual Power 15-30 uW/cm2/nm @ 12 inch standard
- Day Light Examination LED for better skin inspection and skin color compatible
- Low Height Floor Stand Design, easy slide to any warmer or incubator trolley
- Low profile Stand fits below any Warmer or Incubator / Height and Angle Adjustable
- Solid State Design, No Service able Parts
- User Friendly, No training Required
- No Noise < 25dB
- No Running Cost

Full DC inverter

SAVE UP TO 60%*



* DE-ATTACHABLE HEAD FOR INCUBATOR USE

NOTE:
(OEM Version) Modification available according to your demand.
Like: Front Sticker Design, Color Scheme, Shape, Voltage etc.

MODEL: BL-50MS



MANUFACTURE AND DESIGNED BY:



ALLIED TECHNO CONTROL SYSTEMS
JHUMRA ROAD, MANSOORABAD,
FAISALABAD, PAKISTAN-38000.
Tel: +92-41-2422950
alliedtechnologist@gmail.com

SPECIFICATIONS

Product Series	BL-2020 SERIES
Blue LED Life	> 20,000 Hour @ 30C (after 5000 Hour Required Regular Inspection)
Blue Light Effective Area	10 x 18 Inch (300 x 500 mm)
Max. Blue Light Power	30 uW/cm2/nm @ 12 inch approx. and Temp. 30C
Dimensions	24 x 36 x 60 inch - 610 x 915 x 1530 mm
Weight	15Kg [33Lb] Net Weight (Head 6Kg[13Lb] , Stand 9Kg [20Lb]) - 18Kg [40Lb] Gross
Floor Dimension	24 x 36 inch - 610 x 915mm
Floor Stand Height Clearance	3 inch (76 mm)
Power Inlet Connection Type	IEC 60320 Standard C13 Inlet or Fix Wired EU(CEE 7/7) / US (NEMA 5-15P) optional
Voltage (Hz) - Watts	100-260V (50-60Hz) AC/DC - Max. 40W@230V
Operating Environment	5 to 40°C , humidity: 20 to 85% RH, non-condensing
Unit Structure	Metal Sheet with Flame Retardant Epoxy Paint (Insulated)
Wheels (Floor Clearance)	3x Swivel Caster 2.0 inch 50mm [2xBrake 1x Free] (Floor Clearance 3 inch 75mm) Low Profile Stand

* Comparison with Five Fluorescent Tube Rods Tube Light Phototherapy Unit.

INFANT WARMER CARE UNIT

KEY FEATURES

- Fully Automatic Heater Controller with Baby Skin Sensor
- Adjustable Heat Setting up to 37 C
- Heater Active/Deactivate push (on/off)
- Automatic Heater Power (0 to 100%) Control Heating System
- On Screen Heater Power / Real Temp / Set Temp Readings
- High / Low Heating / Sensor Break Alarms
- Skin Sensor accidental Drop Down Alarm
- YSI400 Standard Skin Sensor with High accuracy (+- 0.25C @ 25.0C)
- Faults Indication Onscreen and Sound Buzzer
- Alarm Buzzer Mute
- Examination Lamp / Left / Right Tubes
- Heater Power Solid State Control no Mechanical Relay or Switch
- IV Stand / Cardio Monitor Shelf
- High Grade Powder Coated MS Sheets Design
- One Drawer and One Cabinet at lower bed
- Bed Up / Down Manual Adjustment (-5 to +10 degree)
- Touch Push and Splash Proof Front Panel



NOTE:
Any Modification Available on Demand

MODEL: BBL-7SHTD



ALLIED TECHNO CONTROL SYSTEMS
JHUMRA ROAD, MANSOORABAD,
FAISALABAD, PAKISTAN-38000.
+92-321-6622966
ALLIEDTECHNOLOGIST@GMAIL.COM

SPECIFICATIONS

PLC Controller Series	7S HTD Series Warmer Controller
Dimensions	72 H x 26 W x 32 D (inch)
Net Weight	50Kg (approx.)
Connection Type	PAK Standard UL Certified
Power	200 to 260 VAC - 1050 Watts max. 50-60Hz
Heater Type	INFRA RED HEATING SYSTEM
Operating Environment	5 to 40°C , humidity: 10 to 80% RH, non-condensing
Enclosure / Body / Frame	Flame-Retardant Metal Sheet - ABS material(UL-94) - Acrylic
Warm-up Time	Depend On Environment Temp - 1C Per 2 Minutes Maximum @ 25C Ambient
Display Resolution	0.1°C (with YSI400 Skin Probe RTD)
Wheel Type	Rubber Wheel 4 inch (2x Free / 2x Brake)
Side Bumper Protection	N / A
Paint Type	High Grade Epoxy Powder Coating (Customized Available)
Side Lights	Standard White Light (Therapy Light Optional)
Examination Light	Natural Warm Light (Skin Hue Compatible)

INFANT WARMER CARE SYSTEM

KEY FEATURES

- Suitable for Automatic Infant Warmer Heating System
- Fully Automatic Servo Voltage Control Heating System
- High / Low Heating Alarms
- Manual / Auto Heating Operation
- YS1400 Temp. Sensor Interface with 1% accuracy
- High Visibility Blue Crystal Display with Back Light for Poor Light Environment
- Sensor Faults Indication and Sound Buzzer
- Heater Power Solid State Control
- Dual Therapy Lights Control
- Suction Pump Control (or heater on/off)
- Touch Push and Splash Proof Front
- Accurate and Highly Stable, User Friendly Operation
- Easy replacement & Wiring (included)



NOTE:

We can modify or add any function according to your machine Hardware, also modify Front sticker according to your company name and color.

MODEL: AT-IKN90



MANUFACTURE AND DESIGNED BY:



ALLIED TECHNO CONTROL SYSTEMS
 JHUMRA ROAD, MANSOORABAD,
 FAISALABAD, PAKISTAN-38000.
 +92-321-6622966
 ALLIEDTECHNOLOGIST@GMAIL.COM

SPECIFICATIONS

Controller Series		WARMER 90 Series
Dimensions		210x160x45 mm , weight 850g (approximate)
Panel Cutout		199x149 mm (+/-0.3 mm)
Terminal Connection		Complete Wiring Included
Voltage (only control circuit)		185 to 250 VAC - 5VA maximum 50-60Hz
Operating Environment		5 to 45°C , humidity: 10 to 70% RH, non-condensing
Instrument Case		Flame-Retardant ABS plastic case (UL-94)
Warm-up Time		< 5 Seconds maximum
Input	Display Resolution	0.1°F/C or 1°F/C (Pt100 RTD); 1°F/C (thermocouples)
	Input Sample Rate	FAST
	Accuracy	RTD Ys1400 Temp. Probe , 1% of span ±0.1°C ± 0.1 digit
	Impedance	0-20mV and thermocouples: >10 M
	Pt100 Measurement	N/A
Output	Resistive	
	Inductive	4- Mechanical Relay : Max 1A / 240V

7S INFANT WARMER CARE SYSTEM

KEY FEATURES

- 7S Controller is suitable for Automatic Sensors Control Infant Warmer Trolley
- Automatic Pulse Control Heating System
- High / Low Heating and Sensor Alarms
- Manual / Auto Heating Operation
- YS1400 Temp. Sensor Interface with 1% accuracy
- High Visibility Red Segment Display
- Sensor Faults Indication and Sound Buzzer
- No Mechanical Part / Solid State Control
- Dual Therapy Lights Control
- Examination Lamp Control
- Touch Push and Splash Proof Front
- Accurate and Highly Stable, User Friendly Operation
- Easy replacement & Installation
(Wiring included)



NOTE:
We can modify or add any function according to your machine Hardware,
also modify Front sticker according to your company name and color.

MODEL: 7S WARMER



MANUFACTURE AND DESIGNED BY:



ALLIED TECHNO CONTROL SYSTEMS
JHUMRA ROAD, MANSOORABAD,
FAISALABAD, PAKISTAN-38000.
+92-321-6622966
ALLIEDTECHNOLOGIST@GMAIL.COM

SPECIFICATIONS

Controller Series	WARMER 7S Series	
Dimensions	255x190x50 mm , weight 900g (approximate)	
Panel Cutout	235x171 mm (+/-0.5 mm)	
Terminal Connection	Complete Wiring Included	
Voltage (only control circuit)	90 to 260 VAC - 5VA maximum 50-60Hz	
Operating Environment	5 to 50°C , humidity: 10 to 70% RH, non-condensing	
Instrument Case	Flame-Retardant ABS plastic case (UL-94)	
Warm-up Time	< 15 Seconds maximum	
Input	Display Resolution	0.1°C (YSI400 RTD)
	Input Sample Rate	100 mSec
	Accuracy	RTD YSI400 Temp. Probe , 1% of span $\pm 0.1^{\circ}\text{C} \pm 0.1$ digit
	Impedance	>1 M
	Pt100 Measurement	N/A
Output	Resistive	
	Inductive	Four AC Solid State Relay : Max 1A / 240V each

WASTE INCINERATOR DUAL CHAMBER 20-25 Kg/Hour Burning

KEY FEATURES

- Automatic PLC Controlled Incinerator Plant with Dual Heat Burners and Dual Chamber
- Burning Capacity up to 25Kg Per Hour approx.
- Timer up to 240 minute
- GAS / DIESEL Burner Optional
- Enforced Oxygen Injecting Blower System
- Primary Temperature up to 850 DegC.
- Secondary Temperature up to 1100 DegC.
- Manual Loading / Unloading (Auto Optional)
- Auto Start at Power Fail During Process
- Fast Temperature Rise Control Function Automatic Detect Fast Burning Materials and Save Burner Fuel Consumption by turn OFF/ON burner automatically
- Suitable for Waste of Hospital / Industrial / Poultry farms / veterinary/ Pet cremation / Wood & paper burning / Municipal & Quarantine / Obsolete Drugs / Security Documents / Oil / Obsolete Currency



NOTE:
Modification Possible according to your Demand.

MODEL: INCI-FIRE 25K1P

SPECIFICATIONS

PLC Controller Series	INCI-TECH Series
Incinerator Model No.	INCI-FIRE 25K1P
Dimensions / Weight	4.5 x 5.5 x 7.5 Feet Approx. / 3000Kg approx.
Number Of Burners	2
Burning Rate	20-25 KG PER HOUR APPROXIMATE
Voltage Connection	240V 1PHASE / 440V 3PH (Optional)
Required Power	2.2KW / 3.5 KW MAX
Operating Environment	5 to 60°C , humidity: 10 to 90% RH, non-condensing
Fuel Type / Consumption	3-5L DIESEL per Hour / TBD depend on Waste
Warm-up Time	15-30 Minute
Loading / Unloading Method	Manual Loading / Manual ASH Removing
Number of Chamber	2

AUTOMATIC STEAM STERILIZATION AUTOCLAVE UNIT 400 LITERS

KEY FEATURES

- Fully Automatic with Vacuum System and Dry Systems
- Chamber Size (HxWxD) 24x24x42 inch
- Denfoss Denmark Pressure Switch
- Steam Solenoid Denfoss / Pneumatic Taiwan
- Microprocessor Control / Touch Control Optional
- Dual Temperature Setting 121-134 Deg. C.
- Time Control up to 30 Minutes
- Printer Output for Sterilization Validation
- Single and Double Doors Optional
- Manual Door / Auto Door Optional
- Pressure Gauges for Indication Chamber Status and Jacket Status
- Special Chamber Vacuum Systems
- Fast and Accurate Dry for all types of items
- Internal Steam Generator 304L
- Automatic Water Level Control
- Chamber / Jacket Over Steam Safety
- Heat Insulation 2 inch Glass Wool
- Internal Tubing SS 304L
- Easy Loading / Unloading System
- Status, Faults Indication and Sound Buzzer
- Touch Push and Splash Prof Front
- Accurate and Highly Stable, User Friendly Operation



NOTE:
We can modify or add any function according to your machine Hardware,
also modify Front sticker according to your company name and color.

MODEL: AC400-SF



www.alliedtechno.com

ALLIED TECHNO CONTROL SYSTEMS
JHUMRA ROAD, MANSOORABAD,
FAISALABAD, PAKISTAN-38000.
+92-321-6622966
ALLIEDTECHNOLOGIST@GMAIL.COM

SPECIFICATIONS

Chamber Capacity	400 Liters
Controller Series	SAC PLC Series
Dimensions	38x72x48 inch (WxHxD) , weight 1100Kg (approximate)
Floor Space Required	60 x 60 inch (approximate)
External Connection	RO Water Supply / 3 PHASE Electricity with Safety Breakers
Voltage / Wattages	380V 3 Phase - 30KW Maximum
Operating Environment	10 to 55°C , humidity: 10 to 70% RH, non-condensing
Frame Construction Material	Chamber: 316L 6mm Jacket: 304L 5mm
Warm-up Time	30-45 Minutes maximum
Internal Steam Generator	30KW SS304L
Insulation	New Glass Wool 2 inch Thick
Vacuum System	Latest Technology Venturi Vacuum System

REFERENCE AUTOCLAVE MODELS CAN BE MODIFY AS SPECS

AUTOCLAVE CHOICE



1A
(Auto Door)
(250 - 600 Liters)



2B
(Auto Door)
(150 - 400 Liters)



3C
(Manual Door)
(200 - 600 Liters)



4D
(Manual Door)
(250 - 1000 Liters)

CONTROLLER CHOICE



C1
China Temp. Control and Manual
(China Made - No Burn Warranty)



C2
Microprocessor 5.5 Inch Control
(Pakistan Made - 100% Warranty)



C3
Touch 7 Inch Control
(Taiwan Made - No Burn Warranty)
(Preset Program, Digital Pressure option)



C4
Multi Touch 10.1 Inch Control
(Pakistan Made - 100% Warranty)
(Real Graph, Log, History, Preset Program, Digital Pressure, Central Monitoring, USB Data Backup)

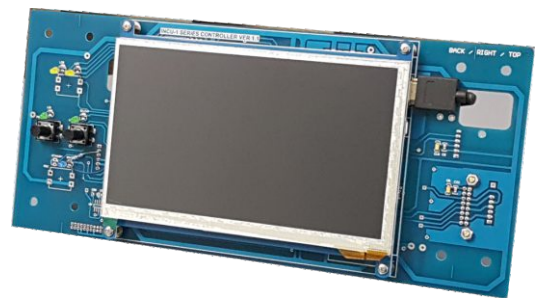
NOTE:

- Available Capacity Size (150 to 1000 Liters Horizontal Square)
- Available Door Options (Manual or Auto Door) (Single or Double Door)
- All Prices without any TAX and Transportation (Ex FSD). First Installation is free.
- We recommend and use new parts. Used parts available on demand for discounted prices.
- One year free service for equipment without engineer traveling charges.
- Payment 65% Advance, 35% Before Delivery.

INFANT INCUBATOR FRONT HMI CONTROLLER

KEY FEATURES

- INCU1 Series Infant Incubator Controller is suitable for Air/Skin/Humidity Controlled Infant Incubator.
- High Resolution 7 inch Multi Touch Capacitive IPS LED Display with tempered glass for Ridge use as possible.
- Industrial windows 10 Operating System
- User Friendly Operating System front
- Air / Skin Temperature and Humidity Data Log with Graph Display for up to 24 Hours
- SPO2 Interface Optional
- Weight Scale Interface Optional
- Thermal Printer Interface Optional
- Sensor High/Low/Disconnect/Water Alarms
- Solid State Control No Mechanical Part
- Accurate and Highly Stable, User Friendly Operation
- Easy replacement & Installation



TOUCH SCREEN FRONT GRAPHIC



NOTE:
Modify or Add any function according to your required Hardware / Software.

MODEL: INCU1-HMI1



LAN/WIFI
PC MONITORING
(optional)



MANUFACTURE AND DESIGNED BY:



ALLIED TECHNO CONTROL SYSTEMS
JHUMRA ROAD, MANSOORABAD,
FAISALABAD, PAKISTAN-38000.
allidtechnologist@gmail.com

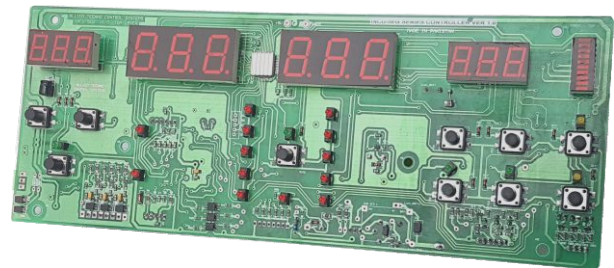
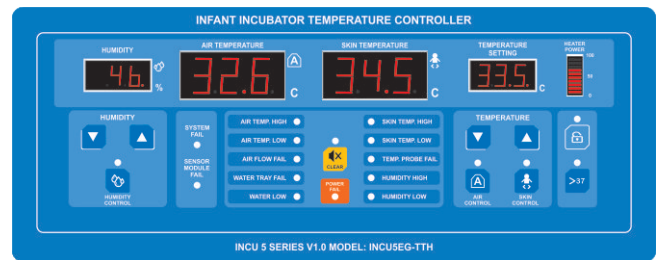
SPECIFICATIONS

Controller Series	INCU-1 Series	
Dimensions	285x135x50 mm , weight 850g (approx)	
Panel Cutout	INCU-1 Drill Pattern # 1	
Terminal Connection	General Wiring Included	
Voltage (only control circuit)	5VDC - 3A maximum	
Operating Environment	5 to 50°C , humidity: 10 to 85% RH, non-condensing	
Instrument Case	Flame-Retardant Circuit Board (UL94)	
Warm-up Time	< 30 Seconds	
Input	Display Resolution	0.1°C (RTD 2.252K @ 25C)
	Input Sample Rate	100 mSec
	Accuracy	RTD K2252 / K10 Temp. Probe , 1% of span $\pm 0.1^{\circ}\text{F} \pm 0.1$ digit
	Impedance	>1 M
	Pt100 Measurement	N/A
Output	Resistive	Require Drive Board
	Inductive	

INCU-5EG INCUBATOR TEMPERATURE / HUMIDITY CONTROL

KEY FEATURES

- INCU5 Series Infant Incubator Controller is suitable for Air / Skin / Humidity Controlled Infant Incubator
- High Visibility Large LED Segment Display
- User Friendly Operating System front
- Air / Skin Temperature Control > 37C
- Air Humidity Control > 90 %
- Air / Skin Temperature and Humidity Sensor Interface
- Solid State Control No Service able Mechanical Part inside
- Temperature High / Low Alarms and Sensor Disconnect Alarms, Sensor Module Position Sensor Alarm
- Humidity High / Low Alarms and Water Low Alarm, Tank Position Alarm
- Circulation Fan Fail Alarm (Differential Temperature Sensor Type)
- Air Heater High Temperature Alarm (use separate sensor near Air heater)
- Key Pad Lock Option prevent un-authorized
- Accurate and Highly Stable, User Friendly Operation
- Easy replacement & Installation



NOTE:

We can modify or add any function according to your machine Hardware, also modify Front sticker according to your company name and color.

MODEL: INCU5EG-TTH



MANUFACTURE AND DESIGNED BY:



ALLIED TECHNO CONTROL SYSTEMS
JHUMRA ROAD, MANSOORABAD,
FAISALABAD, PAKISTAN-38000.
allidtechnologist@gmail.com

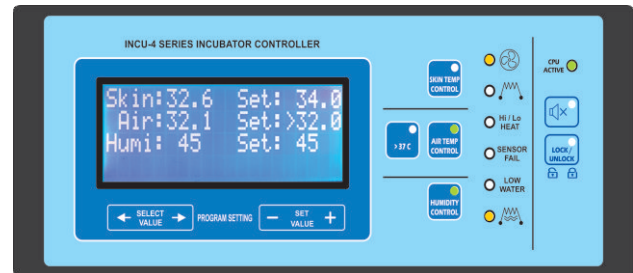
SPECIFICATIONS

Controller Series	INCU-5 Series	
Dimensions	310x120x35 mm , weight 250g (approx)	
Panel Cutout	INCU-5-EG Drill Pattern # 1	
Terminal Connection	General Wiring Included	
Voltage (only control circuit)	5V DC - 300 mA	
Operating Environment	5 to 50°C , humidity: 10 to 85% RH, non-condensing	
Instrument Case	Flame-Retardant Circuit Board (UL94)	
Warm-up Time	< 30 Seconds	
Input	Display Resolution	0.1°C (RTD 2.252K @ 25C)
	Input Sample Rate	100 mSec
	Accuracy	Thermistor 2.252K / 3x Temp. Probe , 1% of span $\pm 0.1^{\circ}\text{F} \pm 0.1$ digit
	Impedance	>1 M
	Pt100 Measurement	N/A
Output	Resistive	
	Inductive	

INCU-4 INFANT INCUBATOR CONTROLLER

KEY FEATURES

- INCU4 Series Infant Incubator Controller is suitable for Air/Skin/Humidity Controlled Infant Incubator.
- High Visibility 5 inch LED Display
- User Friendly Operating System front
- Air / Skin Temperature Control > 37C
- Air Humidity Control > 90 %
- Thermal Printer Interface Optional
- Air / Skin Temperature and Humidity Sensor Interface (All Sensors Included)
- Solid State Control No Mechanical Part
- Temperature High / Low Alarms and Sensor Disconnect Alarms
- Humidity High / Low Alarms and Water Low Alarm
- Circulation Fan Fail Alarm
- Air Heater High Temperature Alarm (use separate sensor near Air heater)
- Key Pad Lock Option prevent un-authorized Operation
- Accurate and Highly Stable, User Friendly Operation
- Easy replacement & Installation



NOTE:

We can modify or add any function according to your machine Hardware, also modify Front sticker according to your company name and color.

MODEL: INCU4-HMI



MANUFACTURE AND DESIGNED BY:



ALLIED TECHNO CONTROL SYSTEMS
 JHUMRA ROAD, MANSOORABAD,
 FAISALABAD, PAKISTAN-38000.
 alliedtechnologist@gmail.com

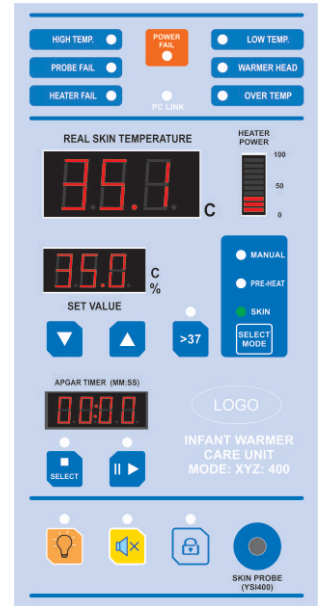
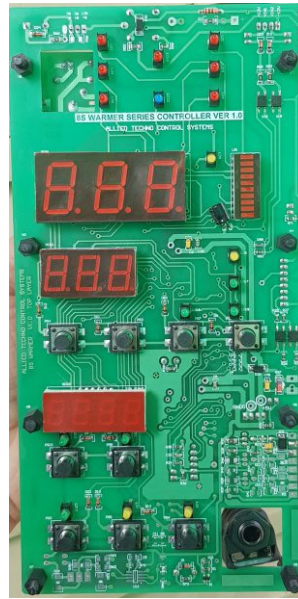
SPECIFICATIONS

Controller Series		INCU-4 Series
Dimensions		295x120x50 mm , weight 1000g (approx)
Panel Cutout		INCU-4 Drill Pattern # 1
Terminal Connection		General Wiring Included
Voltage (only control circuit)		90-280 VAC - 50/60 Hz
Operating Environment		5 to 50°C , humidity: 10 to 85% RH, non-condensing
Instrument Case		Flame-Retardant Circuit Board (UL94)
Warm-up Time		< 30 Seconds
Input	Display Resolution	0.1°C (RTD 2.252K @ 25C)
	Input Sample Rate	100 mSec
	Accuracy	RTD K2252 / K10 Temp. Probe , 1% of span ± 0.1°F ± 0.1 digit
	Impedance	>1 M
	Pt100 Measurement	N/A
Output	Resistive	TTL Communication A B Signals
	Inductive	

INFANT WARMER TEMPERATURE CONTROLLER 8S SERIES

KEY FEATURES

- 8S Series Infant Warmer Controller is suitable for Air Heater Controlled Infant Warmer Trolley
- Manual / Pre-Heat / Baby Skin Mode Select
- Skin Temperature Setting 20-37C (38C)
- Pre Heat Temperature Set 20-37C (39C) (Reminder Beep Every 15 Minutes)
- Manual Mode Heat Setting 0-99% (Reminder Beep Every 15 Minutes and manual set value reduce to 50% after 30 Minutes)
- Solid State Control No Service able Parts inside
- Skin Temperature High / Low Alarms and Sensor Disconnect Alarms
- APGAR Timer (1-5-10-15 Minute Selection)
- Warmer Head Position Sensor Input
- Over Heat Mechanical Sensor Input
- Heater Mechanical Safety Relay
- Key Pad Lock Option prevent un-authorized
- High Visibility Large LED Segment Display
- User Friendly Operating System
- Accurate and Highly Stable, User Friendly Operation
- Easy replacement & Installation



NOTE:

We can modify or add any function according to your machine Hardware, also modify Front sticker according to your company name and color.

MODEL: 8S-TT



MANUFACTURE AND DESIGNED BY:



ALLIED TECHNO CONTROL SYSTEMS
 JHUMRA ROAD, MANSOORABAD,
 FAISALABAD, PAKISTAN-38000.
 allidtechnologist@gmail.com

SPECIFICATIONS

Controller Series	8S WARMER SERIES	
Dimensions	120x240x65 mm , weight 500g Net (800g Gross)	
Panel Cutout	8S-TT Drill Pattern # 1	
Terminal Connection	General Wiring Included	
Voltage (only control circuit)	90-250V (50-60Hz) - 5VA	
Operating Environment	5 to 50°C , humidity: 10 to 85% RH, non-condensing	
Instrument Case	Flame-Retardant Circuit Board (UL94)	
Warm-up Time (Controller)	< 10 Seconds	
Input	Display Resolution	0.1°C (RTD 2.252K @ 25C)
	Input Sample Rate	100 mSec
	Accuracy	Thermistor 2.252K 1% of span $\pm 0.20^{\circ}\text{C} \pm 0.1$ digit
	Impedance	>1 M
	Pt100 Measurement	N/A
Output	Resistive	1x AC HEATER / 1x LAMP / 1x SUCTION
	Inductive	

WALL MOUNT INFANT WARMER CONTROLLER

KEY FEATURES

- Ready To use Wall Mount Infant Warmer Controller, Suitable for Existing non Automatic Infant Warmer Simple Heaters
- Fully Automatic Servo Voltage Control Heating System
- High / Low Heating Alarms
- Manual / Auto Heating Operation
- YS1400 Temp. Sensor Interface with 1% accuracy
- High Visibility Blue Crystal Display with Back Light for Poor Light Environment
- Sensor Faults Indication and Sound Buzzer
- Heater Power Solid State Control
- Touch Push and Splash Prof Front
- Accurate and Highly Stable, User Friendly Operation
- Easy replacement & Wiring(included)



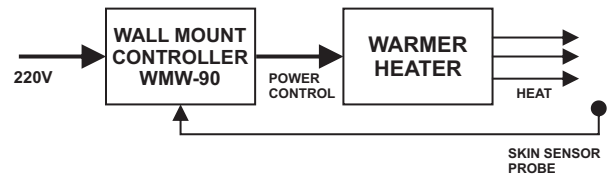
NOTE:
We can modify or add any function according to your machine Hardware, also modify Front sticker according to your company name and color.

MODEL: WMW-950

TRADITIONAL WARMER HEATER
(NO AUTO CONTROL - FIXED TURN HEATER ON)



AUTOMATIC WARMER HEATER
(SENSOR AUTO CONTROL - ADJUST HEATER POWER AUTO)



MANUFACTURE AND DESIGNED BY:



ALLIED TECHNO CONTROL SYSTEMS
JHUMRA ROAD, MANSORABAD,
FAISALABAD, PAKISTAN-38000.

SPECIFICATIONS

Controller Series	WARMER WMW950 Series	
Dimensions	250x200x100 mm , weight 1850g (approximate)	
Panel Cutout	N/A	
Terminal Connection	EU PLUG IN / EU PLUG OUT (Ready to Use)	
Voltage (only control circuit)	150 to 250 VAC - 5VA maximum 50-60Hz	
Operating Environment	5 to 45°C , humidity: 10 to 85% RH, non-condensing	
Instrument Case	ABS (UL-94) 100% USER ELECTRICAL SAFETY BOX	
Warm-up Time	< 5 Seconds maximum	
Input	Display Resolution	0.1°F/C or 1°F/C (Pt100 RTD); 1°F/C (thermocouples)
	Input Sample Rate	FAST
	Accuracy	RTD Ys1400 Temp. Probe , 1% of span ±0.1°C ± 0.1 digit
	Impedance	0-20mV and thermocouples: >10 M
	Pt100 Measurement	N/A
Output	Resistive	
	Inductive	N/A

WALL MOUNT INFANT WARMER CONTROLLER

KEY FEATURES

- Ready To use Wall Mount Infant Warmer Controller, Suitable for Existing non Automatic Infant Warmer Simple Heaters
- Fully Automatic PWM Voltage Control Heating System Power Control
- High / Low Heating Alarms
- Manual / Auto Heating Operation
- YSI-400 Temp. Sensor Interface with 1% accuracy
- High Visibility Red Segment Display
- Sensor Faults Indication and Sound Buzzer
- Heater Power Solid State Control
- Touch Push and Splash Prof Front
- Accurate and Highly Stable, User Friendly Operation
- Easy replacement & Wiring



NOTE:

We can modify or add any function according to your machine Hardware, also modify Front sticker according to your company name and color.

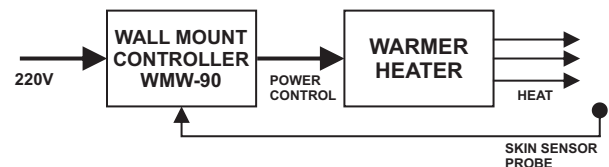
MODEL: WMW-90



TRADITIONAL WARMER HEATER
(NO AUTO CONTROL - FIXED TURN HEATER ON)



AUTOMATIC WARMER HEATER
(SENSOR AUTO CONTROL - ADJUST HEATER POWER AUTO)



ALLIED TECHNO CONTROL SYSTEMS
JHUMRA ROAD, MANSOORABAD,
FAISALABAD, PAKISTAN-38000.
+92-321-6622966
ALLIEDTECHNOLOGIST@GMAIL.COM

SPECIFICATIONS

Controller Series	WARMER WM90 Series	
Dimensions	210 x 160 x 90 mm , weight 1200g (approximate)	
Panel Cutout	N/A	
Terminal Connection	Ready To use	
Voltage (only control circuit)	150 to 250 VAC - 5VA maximum 50-60Hz	
Operating Environment	5 to 50°C , humidity: 10 to 85% RH, non-condensing	
Instrument Case	MS Plastic coated case (UL-94)	
Warm-up Time	< 5 Seconds maximum	
Input	Display Resolution	0.1°F/C or 1°F/C (Pt100 RTD); 1°F/C (thermocouples)
	Input Sample Rate	FAST
	Accuracy	RTD Ys1400 Temp. Probe , 1% of span ±0.1°C ± 0.1 digit
	Impedance	0-20mV and thermocouples: >10 M
	Pt100 Measurement	N/A
Output	Resistive	
	Inductive	N/A

AUTOMATIC AUTOCLAVE CONTROL SYSTEM

KEY FEATURES

- Suitable for Fully Automatic Steam Autoclave 200L to 2000L Horizontal
- Internal / External Steam Selectable
- Dual Temperature Setting 121-134 Deg. C.
- Time Control up to 30 Minutes
- Direct Printer Output RS-232 for Continuous Time, Temp. and Status Reporting
- Single and Double Doors Selectable
- Onscreen Temp., Time, Doors and Steam Indication
- K-Type Single and Double Temp. Sensor Interface with 1% accuracy.
- High Visibility Blue Crystal Display with Back Light for Poor Light Environment
- Status, Faults Indication and Sound Buzzer
- Touch Push and Splash Proof Front
- Accurate and Highly Stable, User Friendly Operation
- Easy replacement & Wiring(included)

Programable Settings According to Capacity:

- | | |
|------------------|-----------------------|
| 1- Steam Pulse | 2- Dry Cycle |
| 3- Post Vacuum | 4- Pre- Vacuum Time |
| 5- Purging Cycle | 6- Steam Exit Time |
| 7- Dry Time | 8- Air in Time at End |

and many more internal settings, refer to manual.



NOTE:
We can modify or add any function according to your machine Hardware, also modify Front sticker according to your company name and color.

MODEL: SAC-950+



MANUFACTURE AND DESIGNED BY:



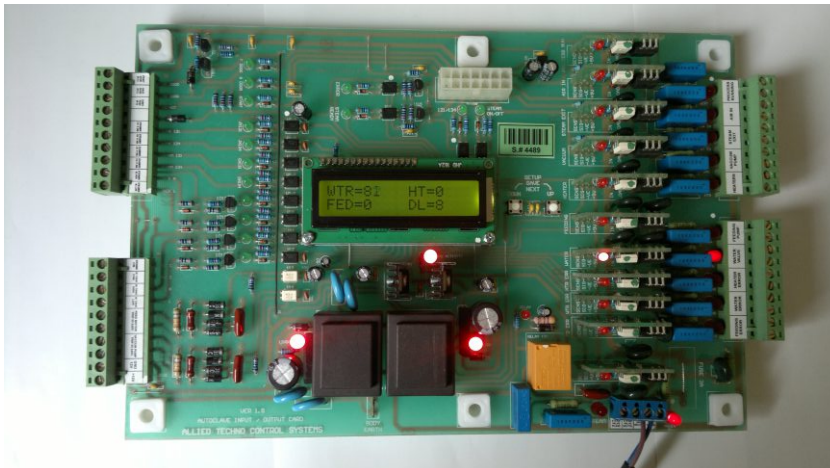
www.alliedtechno.com

ALLIED TECHNO CONTROL SYSTEMS
JHUMRA ROAD, MANSOORABAD,
FAISALABAD, PAKISTAN-38000.
+92-321-6622966
ALLIEDTECHNOLOGIST@GMAIL.COM

SPECIFICATIONS

Controller Series		CLAVE SS-300RE Series
Dimensions		210x160x50 mm , weight 950g (approximate)
Panel Cutout		199x149 mm (+/-0.3 mm)
Terminal Connection		Complete Wiring Included
Voltage (only control circuit)		80 to 265 VAC - 6VA maximum 45-65Hz
Operating Environment		5 to 45°C , humidity: 10 to 70% RH, non-condensing
Instrument Case		Flame-Retardant ABS plastic case (UL-94)
Warm-up Time		25 Seconds maximum
Input	Display Resolution	0.1°F/C or 1°F/C (Pt100 RTD); 1°F/C (thermocouples)
	Input Sample Rate	10 per second (100 ms)
	Accuracy	Thermocouples J, K, 2% of span ±1°C ± 1 digit Pt100, mA mV and Volts: 1% of span ± 1 digit
	Impedance	0-20mV and thermocouples: >10 M
	Pt100 Measurement	N/A
Output	Resistive	N/A
	Inductive	N/A

AUTOCLAVE INPUT OUTPUT CARD WITH DUAL WATER LEVEL



MODEL: IOC-951



MANUFACTURE AND DESIGNED BY:
ALLIED TECHNO CONTROL SYSTEMS
 www.alliedtechno.com
 ALLIED TECHNO CONTROL SYSTEMS
 JHUMRA ROAD, MANSOORABAD,
 FAISALABAD, PAKISTAN-38000.

KEY FEATURES

- Input Output Card Compatible with SAC Series AUTOCLAVE PLC or any Other PLC
- Mechanical Safety Relay for Steam Valve with Front and Back Door open
- Tank Water Level Control with Water Inlet V.
- Chamber Water Level Control with W. Pump
- Interlocking Between Water Leveling Procc.
- Water Pump / Vacuum Pump Trip Input
- Turn OFF Water Pump At low water Tank to avoid Feed Pump Air Chocking
- Accurate and Highly Stable, User Friendly Operation

- De-attachable LCD Display to adjust IO Card Parameters
- All Functions Run with Interlocking to avoid any Damage or User Mishandling
- Double Door Input (Front / Back)
- Chamber Pressure Double Input (121/134)
- Jacket Pressure Double Input(121/134)

Programable Settings According to Capacity:

- 1- Water Inlet Timer (up to 30min)
 - 2- Heater On Timer
 - 3- Feeding Pump Timer
 - 4- Output On/Off Delay
- and many more safety timers*

SPECIFICATIONS

Controller Series	CLAVE SS-301	
Dimensions	300x190x55 mm , weight 800g (approximate)	
Panel Cutout	Drawing IOC-WR-3	
Terminal Connection	Complete Wiring Included	
Voltage (only control circuit)	80 to 265 VAC - 6VA maximum 45-65Hz	
Operating Environment	5 to 45°C , humidity: 10 to 70% RH, non-condensing	
Instrument Case	FR-4 Standard Open Circuitry	
Warm-up Time	5 Seconds maximum	
Input	Display Resolution	N/A
	Input Sample Rate	10 per second (100 ms)
	Accuracy	N/A
	Impedance	>10 M
	Pt100 Measurement	N/A
Output	Resistive	11- Solid State Relay: 2A@250VAC
	Inductive	11- Solid State Relay: 1A@250VAC

AUTOMATIC WASTE INCINERATOR CONTROLLER

KEY FEATURES

- Suitable for Automatic Waste Incinerator Plant with Dual Heat Burners
- Timer up to 240 minute
- Primary Temperature up to 850 DegC.
- Secondary Temperature up to 1100 DegC.
- Burner or Blower Tripping Alarms
- Auto Start at Power Fail During Process
- Fast Temperature Rise Control Function Automatic Detect Fast Burning Materials and Save Burner Fuel Consumption by turn OFF/ON burner automatically
- Auto Select Pre-Heating Function
- Adjustable Pre-Heat Time and Temp.
- Automatic Blower turn OFF at set low Temp
- Adjustable Blowers turn OFF Timer
- On board Temp Calibration Error Correction
- Dual K-Type Thermocouple Interface
- High Visibility Blue Crystal Display with Back Light for Poor Light Environment
- Sensor Faults Indication and Sound Buzzer
- Touch Push and Splash Proof Front
- Accurate and Highly Stable, User Friendly
- Easy replacement & Wiring(included)



NOTE:

We can modify or add any function according to your machine Hardware, also modify Front sticker according to your company name and color.

MODEL: INCI TECH 30A

MANUFACTURE AND DESIGNED BY:



ALLIED TECHNO CONTROL SYSTEMS
 JHUMRA ROAD, MANSOORABAD,
 FAISALABAD, PAKISTAN-38000.
 +92-321-6622966
 ALLIEDTECHNOLOGIST@GMAIL.COM

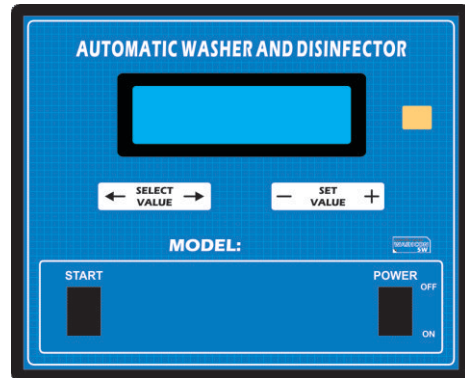
SPECIFICATIONS

Controller Series	INCI 30A Series	
Dimensions	210x160x50 mm , weight 1100g (apprx.)	
Panel Cutout	199x149 mm (+/-0.3 mm)	
Terminal Connection	Complete Wiring Included	
Voltage (only control circuit)	85 to 260 VAC - 5VA maximum 50-60Hz	
Operating Environment	5 to 60°C , humidity: 10 to 90% RH, non-condensing	
Instrument Case	Flame-Retardant ABS plastic case (UL-94)	
Warm-up Time	< 10 Seconds maximum	
Input	Display Resolution	0.1°F/C or 1°F/C (Pt100 RTD); 1°F/C (thermocouples)
	Input Sample Rate	FAST
	Accuracy	K- TYPE Temp. Probe up to 1300DegC, 1% of span ±1°C ± 1 digit
	Impedance	0-20mV and thermocouples: >10 M
	Pt100 Measurement	N/A
Output	Resistive	5- AC Solid State Relay : Max 3A / 240V each
	Inductive	5- AC Solid State Relay : Max 1A / 240V each

INSTRUMENT WASHER AND DIS-INFECTOR SYSTEM

KEY FEATURES

- Suitable for Semi / Fully Automatic Instrument Washer Equipment
- User Friendly Multi Step Programming
- Automatic Control for Reserve Water Tank along with temperature sensor
- Accurate Feeding Control for Soap / Dis-Infector Liquids
- Multi Step Cycles - Water Fill / Rinse Pre-Wash / Soap / Dis-infactant / Pressure Wash / Dry Cycle, etc.
- Low Water Sensor to avoid water pump chocking
- High Visibility Blue LED Display
- Sensor Faults Indication and Sound Buzzer
- No Mechanical Part / Solid State Control
- Touch Push and Splash Prof Front
- Accurate and Highly Stable, User Friendly Operation
- Easy replacement & Installation
(Wiring included)



NOTE:

We can modify or add any function according to your machine Hardware, also modify Front sticker according to your company name and color.

MODEL: HTD-WD 240



MANUFACTURE AND DESIGNED BY:



ALLIED TECHNO CONTROL SYSTEMS
 JHUMRA ROAD, MANSOORABAD,
 FAISALABAD, PAKISTAN-38000.
 0321-6622966

SPECIFICATIONS

Controller Series	HTD-Washer Series	
Dimensions	210x160x50 mm , weight 850g (approximate)	
Panel Cutout	199x149 mm (+/-0.3 mm)	
Terminal Connection	Complete Wiring Included	
Voltage (only control circuit)	80 to 265 VAC - 6VA maximum 45-65Hz	
Operating Environment	5 to 45°C , humidity: 10 to 70% RH, non-condensing	
Instrument Case	Flame-Retardant ABS plastic case (UL-94)	
Warm-up Time	25 Seconds maximum	
Input	Display Resolution	0.1°F/C or 1°F/C (Pt100 RTD); 1°F/C (thermocouples)
	Input Sample Rate	10 per second (100 ms)
	Accuracy	Thermocouples J, K, 2% of span ±1°C ± 1 digit Pt100, mA mV and Volts: 1% of span ± 1 digit
	Impedance	0-20mV and thermocouples: >10 M
	Pt100 Measurement	N/A
Output	Resistive	N/A
	Inductive	4x

SKIN SENSOR (YSI 400 Compatible)

KEY FEATURES

Cost-effective YSI probes measures temperature with YSI Precision.

Interchangeable thermistors, a highly accurate temperature technology that YSI invented and perfected over the decades. This thermal Expertise, in combination with regulatory experience, manufacturing automation, and custom capability, positions YSI as a leader in temperature measurement for healthcare facilities.

Dependability

- **YSI temperature probes deliver continuous, high-precision measurement Repeatability**

Compatibility

- **YSI probes are designed to plug directly into standard YSI 400 Series monitoring instruments**

Safety

- **With no need for adapter boxes and electrical isolation of conductors, non-latex YSI reusable probes virtually eliminate concerns about safety**

Cost-Effective

- **YSI reusable probes have a cost-per-use far below that of any competitive product or technology**



NOTE:
Any Modification Available on Demand

MODEL: AT2252-6



ALLIED TECHNO CONTROL SYSTEMS
JHUMRA ROAD, MANSOORABAD,
FAISALABAD, PAKISTAN-38000.
+92-321-6622966
ALLIEDTECHNOLOGIST@GMAIL.COM

SPECIFICATIONS

Type Series	YSI400 Compatible
Dimensions	10mm Head Size - 6 Feet Long Wire
Net Weight	165g (approx.)
Connection Type	6.3mm (0.25inch) Phone Jack (Compatible with most Patient Monitors)
Voltage Rating	2.75VDC (Overall Sensor Isolation 2500V)
Sensor Type	Original 2.2--K RTD @ 25C
Operating Temperature	0 to 60°C
Warm-up Time	30 Seconds
Accuracy	+- 0.25 C From 0 to 60 C -- +-0.15 C From 25 to 45 C
Cleaning	Probes should be cleaned with a mild detergent and water to remove excess bioburden and improve effectiveness of disinfection and sterilization.
Sterilization	Ethylene oxide gas, STERIS® System 10



FOR MOST RECENT UPDATED PICTURES VISIT US AT FACE BOOK



**CONTACT US:
FOR
INNOVATIVE CONTROL
SYSTEMS SOLUTION**



ALLIED TECHNO CONTROL SYSTEMS
JHUMRA ROAD, MANSOORABAD,
FAISALABAD, PAKISTAN-38000.

info@alliedtechno.com
alliedtechnologist@gmail.com

TEL: +92-41-2422950, FAX: +92-41-8720958

Faisalabad
Chamber of
Commerce and
Industry
2107104-5805



Quality
Endorsed
Company

 /alliedtechnocontrolsystems/

www.alliedtechno.com